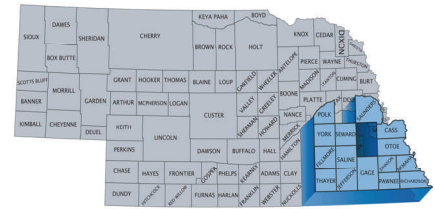


SEND D

Southeast Nebraska Development District



SEND D BOARD OF DIRECTORS



Front Row (L to R) Roberta Pinkerton, Kathy Setzer (Proxy for Myron Dorn – Gage Co.), Bob Hutton, Jim Standerford
2nd Row (L to R) Jim Peterson, Cassie Seagren, Ted Evans, Tim McDermott, Mary Koci, Mark Kolterman, Stephanie Shrader, Daryl Long
Back Row (L to R) Jerry Divis, Brad Grummert, Cheryl Brandenburgh, Ron Hauptman, Brad Stake, Dave Bruning, Leroy Hanson, Bob Mueller
Not Present: Kurt Bulgrin, Mike Smith, Nick Harling, Doug Watts, Jeff Reynolds, Bill Wenz, Lowell Daisley, Myron Dorn

The SEND D board of directors is 27 members strong. It includes one county commissioner from each of the 15 counties in our service area and 12 additional members representing private business sectors and other stakeholders in the region. The board meets quarterly with Executive Committee meetings between full member meetings. Members and their affiliations are as follows:

Government Representatives:

- Jim Peterson—Cass County
- Bob Mueller—Fillmore County
- Myron Dorn—Gage County
- Ted Evans—Johnson County
- Brad Gummert—Jefferson County
- Bob Hutton—Nemaha County
- Ron Hauptman—Otoe County
- Brad Stake—Pawnee County
- Mike Smith—Polk County
- Jim Standerford—Richardson County
- Tim McDermott—Saline County

Private Sector Representatives:

- Leroy Hanson—Saunders County
- Mary Koci—Seward County
- Dave Bruning—Thayer County
- Kurt Bulgrin—York County
- Mark Kolterman—Principal Financial
- Jerry Divis—Home Real Estate
- Nick Harling—American Nat'l Bank
- Cheryl Brandenburgh—Black Hills Energy
- Roberta Pinkerton—OPPD

Stakeholder Organization Representatives:

- Stephanie Shrader—Nebr. City Ec. Dev.
- Doug Watts—Greater Wahoo Dev.
- Cassie Seagren—York County Dev.
- Jeff Reynolds—REAP
- Daryl Long—Peru State College

At-Large Representatives:

- Bill Wenz—Crete
- Lowell Daisley—Cedar Creek

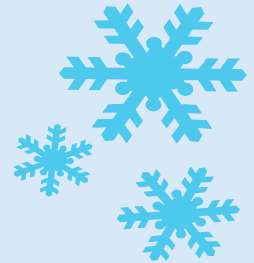
****Board As of January 2013****

Happy Birthday to "Doc" Gigstad

Alfred O. "Doc" Gigstad has made many contributions to local and statewide organizations over the years. A special Birthday Celebration was held Monday, February 18 at the Table Creek Golf Course in Nebraska City, organized by his family and friends.

"Doc" was an early organizer of the Vision 17-Area Wide Planning Agency (Vision 17-APA), which was the direct forerunner of SEND D. Doc was also an original and continuing, Board member of the River Country Economic Development District (RCEDD) until its merger into the present 15-county Southeast Nebraska Development District. We wish you well, Doc, and thank you for all your guidance and service.

FEBRUARY 2013 NEWSLETTER



STAFF

Dave Taladay
Executive Director
dtaladay@sendd.org

Sharon Taylor
Fiscal Officer
staylor@sendd.org

Ben Volz
Housing Rehab Specialist
bvolz@sendd.org

Jim Warrelmann
Housing Rehab Specialist
jwarrelmann@sendd.org

John Trouba
Development Specialist
jtrouba@sendd.org

Craig Eberle
Business Loan Officer
ceberle@sendd.org

Jen Olds
Development Specialist
jolds@sendd.org

Emily Bausch
Development Specialist
ebausch@sendd.org

Lincoln Office
2631 "O" Street
Lincoln, NE 68510-1398
Phone 402-475-2560
Fax 402-475-2794

Kevin Burnison
Development Specialist
senddhumboldt@windstream.net

Lisa Beethe
Development Specialist
senddlisa@windstream.net

Humboldt Office
P.O. Box 308
Humboldt, NE 68376
Phone 402-862-2201

CLUES TO RURAL COMMUNITY SURVIVAL

1. Evidence of Community Pride: Successful communities are often showplaces of community care and attention, with neatly trimmed yards, public gardens, well kept parks. But pride also shows up in other ways, especially in community festivals and events that give residents an excuse to celebrate their community, its history & heritage.
2. Emphasis on Quality in Business & Community Life: People in successful communities believe that something worth doing is worth doing right. Facilities are built to last, and so are homes and other improvements. Newer brick additions to schools are common, for example, and businesses are built or expanded with attention to design and construction detail.
3. Willingness to Invest in the Future: Some of the brick and mortar investments are most apparent, but these communities also invest in their future in other ways. Residents invest time and energy in community improvement projects, and they concern themselves with how what they are doing today will impact on the lives of their children and grandchildren in the future.
4. Participatory Approach to Community Decision Making: Authoritarian models don't seem to exist in these communities, and power is deliberately shared. People still know who you need on your side to get something done, but even the most powerful of opinion leaders seem to work through the systems—formal as well as informal—to build consensus for what they want to do.
5. Cooperative Community Spirit: Successful rural communities devote more attention to cooperative activities than to fighting over what should be done and by whom. The stress is on working together toward a common goal and the focus is on positive results. They may spend a long time making a decision, and there may be disagreements along the way, but eventually, as one small town leader put it, “stuff does get done.”

(Clues #1-5 of 20—From the “Pathways to Community Vitality” conference, sponsored by the Heartland Center for Leadership Development)

UPCOMING PARTNERSHIP MEETINGS

Partners for Progress Meeting

The Partners for Progress group will meet on Tuesday, February 26th at the Auburn City Hall at 5:30 p.m. This group focuses on economic development activities in the far southeast counties of Johnson, Nemaha, Otoe, Pawnee, and Richardson. Participants provide updates on activities in each of the counties and share information and opportunities with each other. Please RSVP to Stephanie Shrader at 402-873-4293 or by email at Director@NebraskaCityAreaEDC.org in order to obtain a count for meals.

MINK Meeting

The Missouri, Iowa, Nebraska, Kansas (MINK) coalition will be meeting on Feb. 28 at the Walters Wellness Center classroom, Highland Community College, 205 N. Prairie, Highland, KS. The meeting will start at 10:00 a.m. and lunch will be available for approx. \$9. Please RSVP to Twila Larson at the Fremont County, IA Economic Development Corp. if you plan to attend and eat lunch by Feb. 25. Her contact information is 712-374-3268 or fredco@iowatelecom.net. A link to a campus map follows: <http://highlandcc.edu/pages/campus-map>. This is a multi-state group that works to build awareness and branding of this region to promote networking and regional awareness. The group works to cross-promote efforts in other states and regions which can be beneficial to groups on every side of the line. Your participation is always welcome.

SERN Meeting

The next meeting of the Southeast Nebraska Resource Network is scheduled for March 20, 2013 at Nebraska City.

Stephanie Shrader of the Nebraska City Area Development Corporation (NCAEDC) will be hosting at the Morton James Public Library in the Kimmel Gallery, 923 1st Corso, Nebraska City, NE 68410. The meeting will begin at 10:00 a.m., followed by lunch and a feature presentation at 1:00 p.m. The Arbor City Committee will be presenting information about the Nebraska City Public Art Project. This is a group of development resource and service providers, and volunteers interested in the betterment of Southeast Nebraska. They meet quarterly to share information about successes, initiatives, resources, and programs for the region. It is a great opportunity for local community leaders to discuss ideas and opportunities for potential projects in SE Nebraska. Everyone is welcome!